

ORIELHOUSE.LONDON

ORIEL HOUSE

RICHMOND

Office suites from 1,500 – 6,950 sq ft



Oriel House is located in the heart of Richmond upon Thames, directly opposite Richmond station.

OVERVIEW

Oriel House is an impressive high street office building that boasts a total of **21,217 sq ft of office space** distributed across the ground floor and three upper levels.

The office accommodation provides the flexibility to be let on a floor-by-floor basis or smaller suites.







SPACE

More than just a place to work, Oriel House offers some great facilities for tenants to collaborate, host and be independent with your own kitchen and social areas.





SPECS



Air conditioning
individually controlled



8 person
passenger lifts



Raised floors



Staffed reception



Suspended ceilings
and recessed lighting



Fully fitted



DDA compliant



On-site
bike racks



10GB fibre
connection



100% renewable
energy



Alarmed suites and
monitored CCTV



Meeting rooms



Shower facilities



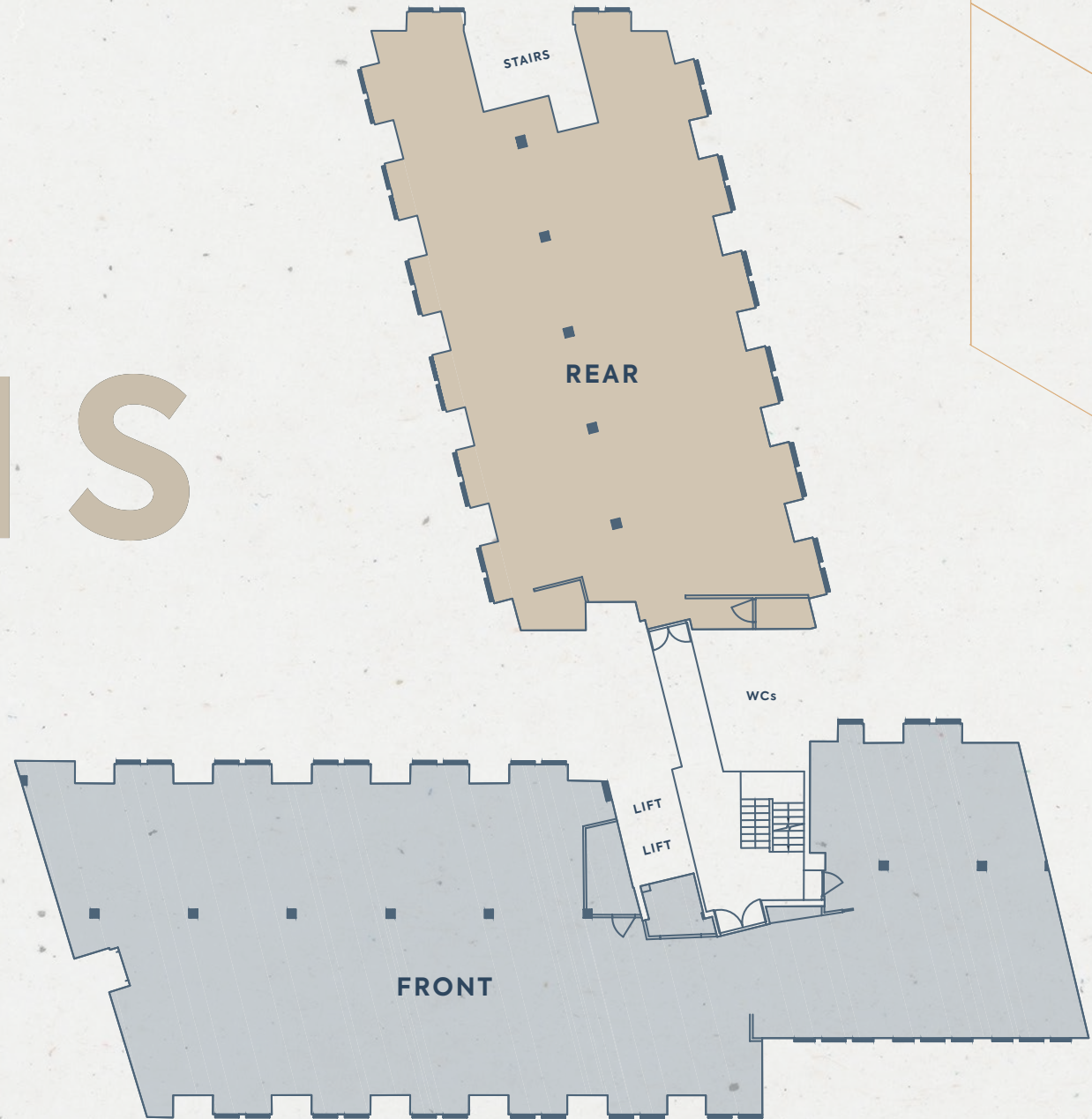
Parking



PLANS

1st floor	rear wing	2,690 sq ft *
1st floor	front wing	4,260 sq ft *
Total		6,950 sq ft

**This space can be split into smaller suites from 1,500 sq ft.*





INDICATIVE FITTED SPACE PLANS

REAR WING

- Up to 40 seats
- Executive office
- Meeting room
- Dedicated kitchen
- Breakout space

FRONT WING

- Up to 55 seats
- 3 Executive offices
- Meeting room
- Breakout space
- Dedicated kitchen
- Storage space
- Server room



LOCATION

The property is located in the heart of Richmond upon Thames, directly opposite Richmond station, close to a selection of restaurants and boutiques.





AREA

The charm of Richmond upon Thames offers a wide range of options away from the desk. From riverside runs at Richmond Park to coffee shops and restaurants, the area is a snapshot of some of the unique delights of London.



ORIEL HOUSE

RICHMOND



Transport links are excellent, with Richmond Station located directly opposite providing mainline, overground and District Line services. The A316 adjacent to Richmond also offers direct access to Central London via the A4 and the UK motorway network via the M3 and M25.

CONNECTIONS



BY ROAD

M4	10 mins
M3	12 mins
London Heathrow Airport	24 mins
Central London	31 mins

BY RAIL

Clapham Jct	10 mins
Wimbledon	21 mins
Paddington	36 mins

BY TUBE

Hammersmith	14 mins
Earl's Court	19 mins
London Victoria	29 mins
Oxford Circus	37 mins



CONTACT

Terms: FRI leases or managed office solutions available.

Viewings: Strictly by appointment via the joint agents.



Richard Farndale
020 8940 2266
r.farndale@martincampbell.co.uk



David Cuthbert
020 3130 6401
dcuthbert@hanovergreen.co.uk

Harry Pruden
020 3130 6416
hpruden@hanovergreen.co.uk

Disclaimer: Hanover Green and Martin Campbell for themselves and for the vendors or lessors of this property whose agents they are give notice that: (i) the particulars are set out as a general outline only for the guidance of intending purchasers or lessees and do not constitute part of, an offer or a contract, (ii) all descriptions, dimensions, references to condition and necessary permissions for use and occupation, and other details are given in good faith and are believed to be correct but any intending purchasers or tenants should not rely on them as statements or representations of fact but satisfy themselves by inspection or otherwise as to the correctness of the property, (iii) no person in the employment of Hanover Green and Martin Campbell has the authority to make or give any representation or warranty whatever in relation to the property. Images used are for illustration purposes only and reflect several potential layouts and designs of the space, subject to client's customisation requirements. Compiled June 2024.